

LUMINDEX™ 3

LED Penlight

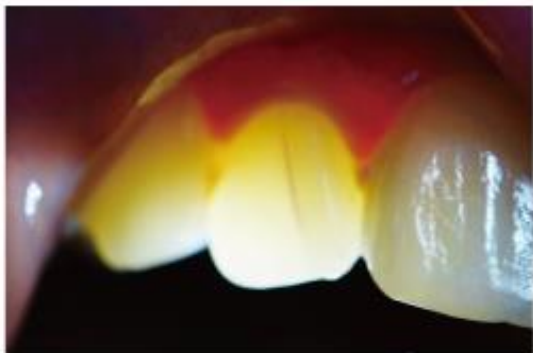


The light has been manufactured with a super-high luminosity LED. The intensity is from 15,000 to 30,000 Lux at 5 mm. These characteristics enable the light to support diagnosis during a therapeutic or surgical intervention.

ADVANTAGE

- Super-high luminosity LED with assists in inspecting caries, calculus, fractures, and root canal orifices.
- Can reduce the need and expense of diagnostic X-rays.
- Immediate feedback saves time and improves patient care.
- Simple HI-LO-OFF one-button, battery-powered operation.

Visual imaging fracture, caries and root canals



Specification

Battery type 2 x AAA alkaline batteries

Color temperature White LED, 6500 °K

Radiant intensity Low mode : 15,000 Lux above at 5 mm
High mode : 30,000 Lux above at 5 mm

Dimensions 16 mmØ (max)x 135mm

Weight 59 g (including batteries)